

TRIDENT



TRIDENT™ SST

Spray Solvent Batch Processing Systems

Innovative Spray Solvent Solutions for Maximum Performance and Lowest Cost of Ownership for 75-200mm Substrates

ClassOne's Trident™ family is the next generation of our batch-processing Spray Solvent Tools (SSTs). They deliver a cascade of solvent or rinse water with maximum efficiency to enhance process performance, reduce chemical consumption and minimize process time and particles.

Our advanced tools also provide a suite of features that maximize operator convenience and control, such as a color touch-screen display, a fully regulated facility panel, electronic flow meters, continuous monitoring level sensors and more. The systems include the powerful Windows-based Solaris™ controller as well as remote login, data logging, GEM/SECSII communications and reliability reporting.

Trident SST models are available for 75 to 200mm substrates – with one or two process chambers; two, four, six or eight heated or unheated chemical tanks; and a wide range of rotors.

Trident SSTs increase uptime and productivity while significantly reducing capital expense – with system pricing that is significantly lower than competitive spray solvent tools.

Features

- One or two process chambers in 2, 4, 6 or 8 heated or unheated tanks
- Wide range of rotors
- Windows-based Solaris™ controller
- Remote login
- Data logging
- GEM/SECSII communications

Benefits

- Significantly lower capital expense
- Maximized productivity
- Increased uptime
- Reduced chemical consumption
- Shorter process time
- Fewer defects
- Easier control and operation
- Available for 75-200mm substrates

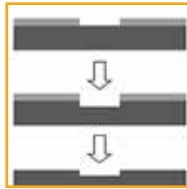
TRIDENT

Trident SST Standard Specifications

- Windows-based Solaris controller
 - Fully regulated attached facility panel
 - Continuous monitoring level sensors
 - Electronic flow meters
 - See-through clear CPVC front door
 - Mechanical door lock
 - Up to 200mm capability, includes customer's choice of rotor
Vibration-free modular mounting system
 - Cylindrical domed-bottom 5-gallon stainless-steel tanks
 - In-line tank heaters, contact or non-contact
- Remote N₂ non-contact modular heater
 - Adjustable N₂ nozzles
 - Recessed, non-obstructed DI manifold
 - Direct drive brushless motor
 - Emergency power off (EPO), front and rear
 - Dynamic rotor-stop positioner
 - Choice of pneumatic or magnetic coupled pumps
 - Pneumatically operated Teflon® valves
 - All stainless-steel cabinetry, easy-access panels
 - Integrated fire detection/suppression system



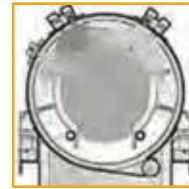
Metal Lift-Off



Resist Stripping



Polymer Removal



Substrate Cleaning



Resist Developing

